



# M3

## Next-gen long-range LiDAR with 940nm tech

M3, the first long-range LiDAR sensor on the M Platform, delivers 300m range at 10% reflectivity and 0.05° x 0.05° angular resolution. The M3 is built on mature RoboSense 2D scanning technology and utilizes 940nm wavelength for its high-performance capabilities.

Wavelength	940nm	Range	300m@10%
ROI angular resolution	0.05° x 0.05°	FOV (H x V)	120°x25°

## Product Advantages



Deep expertise in 2D scanning technology



Mature technology in TX and RX



Continuous iteration and seamless upgrade

RoboSense / Suteng Innovation Technology Co., Ltd.

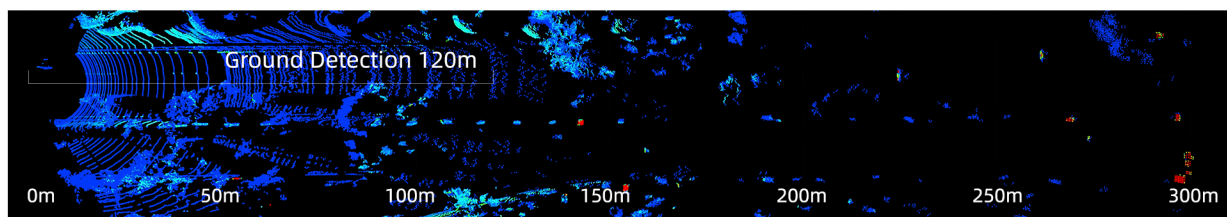
RoboSense Global Headquarters – Building 9, Block 2, Zhongguan Honghualing Industry Southern District, 1213 Liuxian Avenue, Taoyuan Street, Nanshan District, Shenzhen, China



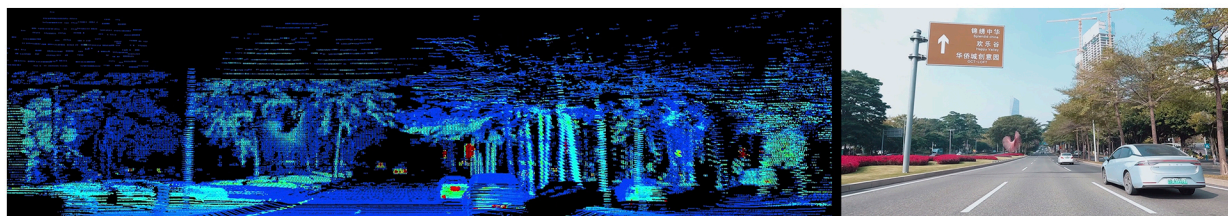
RoboSense LiDAR

# High performance point cloud

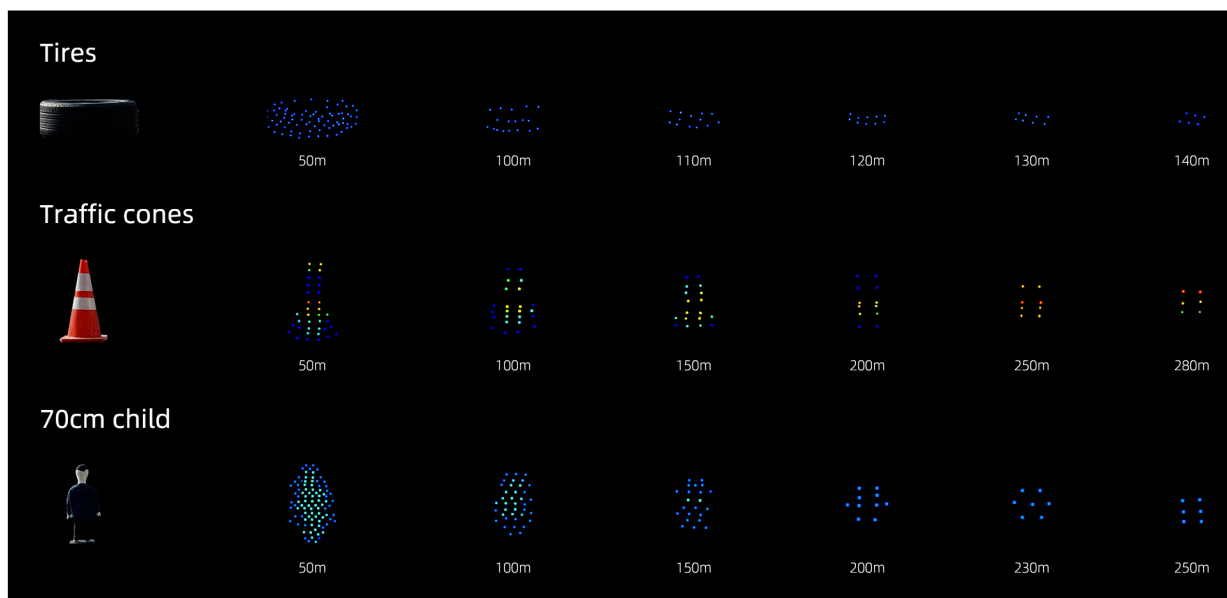
Longer ranging: 300m@10%



ROI angular resolution: 0.05°x0.05°



Effective detection of distant small objects



## Mature technology for project consistency



2D scanning

Utilized since 2016,  
RoboSense's 2D scanning  
is mature.



VCSEL

Advancing robust  
manufacturing capabilities.



SiPM

A mature, mainstream  
industry component.

RoboSense / Suteng Innovation Technology Co., Ltd.

RoboSense Global Headquarters – Building 9, Block 2, Zhongguan Honghualing Industry Southern District, 1213 Liuxian Avenue, Taoyuan Street, Nanshan District, Shenzhen, China



RoboSense LiDAR

[www.robosense.ai](http://www.robosense.ai)